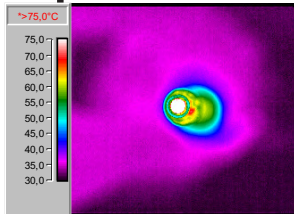


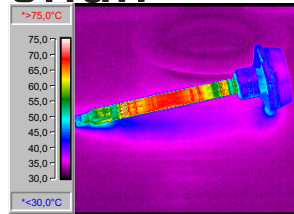
BROELL-Rotor

designed to improve

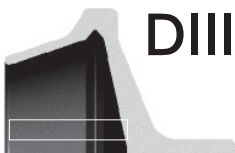
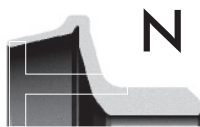
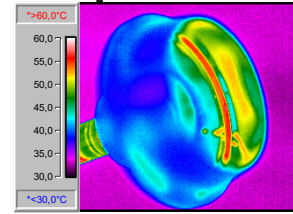
Tip



Shaft



Cup



Rotors manufactured by BROELL are designed to meet the total needs of rotor spinning for all types of yarn and for the full range of rotor speeds. Through years of experience and innovative research, consistent high quality is achieved in groove design, coating parameters, hardness and dynamic balancing. Surface characteristics and inclination of the rotor cup walls is continuously controlled and monitored by BROELL's state-of-the-art equipment.

A wide range of rotors for SCHLAFHORST, SUESSEN and RIETER spinboxes is available. We definitely assist our customers in providing special solutions for special needs.

New materials, production techniques, and the individual needs of our customers give us important direction in our development work. A team of experts is devoted to solving the problems of our customers. Our experience in manufacturing other critical spin box components assist us in developing solutions for spinning problems.

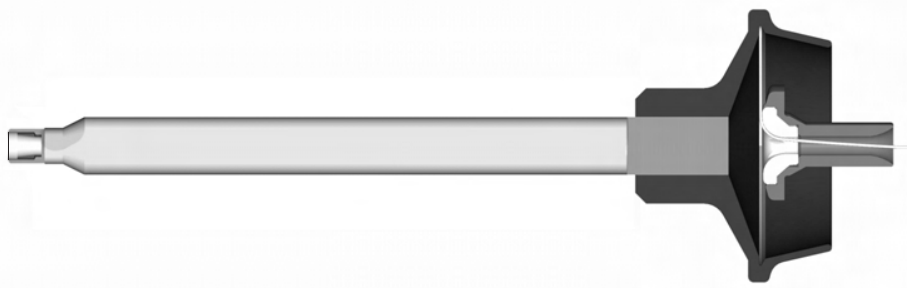
We offer rotors with wear resistant ceramic inserts for the rotor shaft tip. These ceramic inserts run with minimum friction and heat. Through such a process, spin box temperature and wear of the rotor shaft are minimized and thus help reduce spin box component costs. We use state-of-the-art know-how for the coatings of our rotor cups and shafts. The coating of the rotor shaft with a resistant and very even surface features the optimum. Various coatings like diamond, boron and boron/diamond will guarantee best yarn properties and longest lifetime.

Groove types such as T, TC, G, K, S and U for Schlafhorst and Suesen spinboxes or S, M, N, DII, DIII and R for Rieter spinboxes are manufactured with utmost precision and allow the customer to produce any kind of yarn **in combination** with BROELL ceramic navels.



it takes a perfect rotor to make a perfect yarn



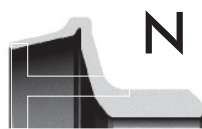


BROELL-Rotor

designed to improve

Warranty period of BROELL-Rotors

Life time of BROELL-Rotors can be guaranteed for the same periods as original rotors due to our highest standard of manufacturing and balancing and use of first quality coating from Wacker Chemie / Germany.



Material	Spinning component	Warranty [hrs]	Expected service life [hrs] (1)
100 % CO	Steel rotor B, BD	15.000	24. – 30.000
	Steel rotor D	8.000	12. – 18.000
Blends e.g. PES/CO	Steel rotor B, BD	15.000	20. – 25.000
	Steel rotor D	8.000	10. – 14.000
100 % PES	Steel rotor B, BD	15.000	20. – 25.000
	Steel rotor D	8.000	10. – 14.000
100 % CV (2)	Steel rotor B, BD	15.000	16. – 20.000
	Steel rotor D	8.000	8. – 12.000
100 % PAN	Steel rotor B, BD	15.000	20. – 25.000
	Steel rotor D	8.000	20. – 14.000



Notes:

Careful handling and maintenance of the rotors is assumed. Wear of the diamond coating in the groove may occur sooner depending on the fibre material and does not constitute reason for a complaint. All the information given is not valid for extremely sandy or bleached cotton and delustrated manmade fibre materials. In the event of a warranty claim, the period for which the rotors were actually used is set off against the purchase price of the replacement rotors.

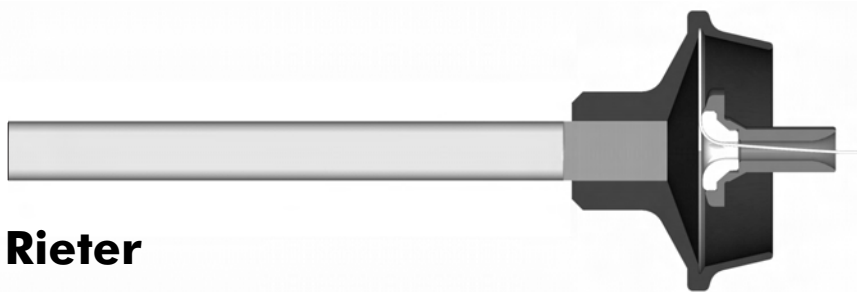
(1) Owing to the influence of material throughput, fibre material and trash content, the expected service life is not a basis for the warranty.

(2) Information does not apply to spun-dyed viscose.

Emil BRÖLL GmbH & Co.

it takes a perfect rotor to make a perfect yarn





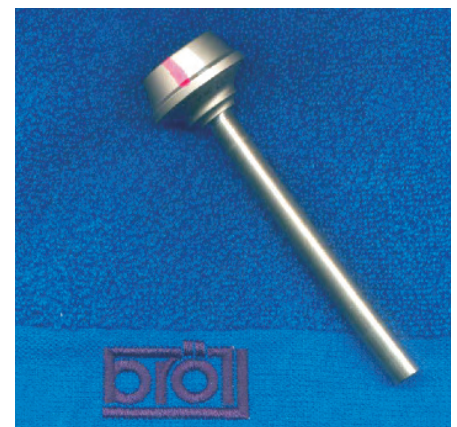
Rieter

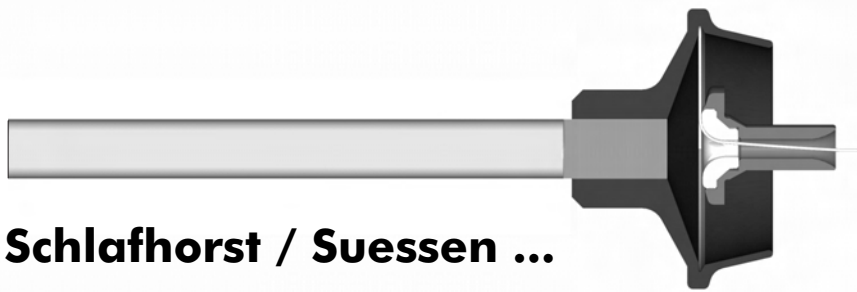
BROELL-Rotor

designed to improve

Grooves	Characteristics	Applications	Spinbox	Diameter
S	<ul style="list-style-type: none"> - Universal application - Good yarn characteristics - Raw material with low trash - No ball warp indigo dyeing 	<ul style="list-style-type: none"> - Weaving - Knitting - Viscose - Terry yarns - Fancy yarns 	<ul style="list-style-type: none"> - RU14A - R1 - R20 	<ul style="list-style-type: none"> - 32,35,40,48 - 28,30,32,35,40,48 - 28,30,32,35,40,48
M	<ul style="list-style-type: none"> - Excellent yarn characteristics - Raw material with very low trash content - Bulky yarn at high rotor speed 	<ul style="list-style-type: none"> - Knitting - Weaving 	<ul style="list-style-type: none"> - R1 - R20 	<ul style="list-style-type: none"> - 31 - 31
N	<ul style="list-style-type: none"> - Good spinning stability - Raw material with high trash content - High yarn bulk 	<ul style="list-style-type: none"> - Knitting - Weaving 	<ul style="list-style-type: none"> - RU14A - R1 - R20 	<ul style="list-style-type: none"> - 32,35,40,48 - 30,32,35,40 - 30,32,35,40
DII	<ul style="list-style-type: none"> - High yarn bulk - Low twist possible - Soft knitting yarns - Low yarn strength but good Uster IPI values - Cotton with high trash content - Coarse yarn counts > 30tex - Very low moiré 	<ul style="list-style-type: none"> - Hosiery yarns - Raised yarns - Denim - Linen - (Terry yarns) - Regenerates 	<ul style="list-style-type: none"> - RU14A - R1 - R20 	<ul style="list-style-type: none"> - 40 - 40 - 40
DIII	<ul style="list-style-type: none"> - High yarn bulk - Good spin stability - Low twist possible - Coarse yarn counts > 40tex - Reduced snarling 	<ul style="list-style-type: none"> - Denim - (Terry yarns) - (Regenerates) 	<ul style="list-style-type: none"> - RU14A - R1 - R20 	<ul style="list-style-type: none"> - 35,40,48 - 35,40,48 - 35,40,48

Coatings	Characteristics
D	<ul style="list-style-type: none"> - Universal application - Good yarn values
B	<ul style="list-style-type: none"> - Highly wear resistant - Low twist possible - Easy to clean
BD	<ul style="list-style-type: none"> - Universal application - Highly wear resistant - Excellent yarn characteristics
DT	<ul style="list-style-type: none"> - Universal application - Longer lifetime compared to D - Good yarn values





Schlafhorst / Suessen ...

BROELL-Rotor

designed to improve

Grooves	Characteristics	Applications	Spinbox	Diameter
T	<ul style="list-style-type: none"> - Universal application - Good yarn characteristics - Raw material with low trash - No ball warp indigo dyeing 	<ul style="list-style-type: none"> - Weaving - Knitting - Regenerates - Terry yarns - Fancy yarns 	<ul style="list-style-type: none"> - SE7/SE8 - SE9/SE10/SE11 - SC1-M/ SC2-M - SC1-R (R40) 	<ul style="list-style-type: none"> - 31,33,36,40,46,56 - 28,31,33,36,40,46,56 - 28,31,33,36,40,46,56 - 28,31,33,36,40,46,56
TC	<ul style="list-style-type: none"> - High spinning stability - Low moiré tendency - Reduced rotor loading - Good yarn characteristics 	<ul style="list-style-type: none"> - Denim - Weaving - Fancy yarns - Regenerates - Linen 	<ul style="list-style-type: none"> - SE7/SE8 - SE9/SE10/SE11 - SC1-M/ SC2-M - SC1-R (R40) 	<ul style="list-style-type: none"> - 33,36,40,46 - 33,36,40,46 - 33,36,40,46 - 33,36,40,46
K	<ul style="list-style-type: none"> - Good yarn characteristics - Raw material with very low trash - Yarn counts < 30tex 	<ul style="list-style-type: none"> - Weaving - Viscose 	<ul style="list-style-type: none"> - SE7/SE8 - SE9/SE10/SE11 - SC1-M/ SC2-M - SC1-R (R40) 	<ul style="list-style-type: none"> - 40 - 28,30 - 28,30 - 28,30
G	<ul style="list-style-type: none"> - Bulky yarn at high rotor speed - Outstanding good spinning stability - Raw material with very low trash 	<ul style="list-style-type: none"> - Knitting - Weaving - Terry yarns - Raised yarns - Viscose 	<ul style="list-style-type: none"> - SE7/SE8 - SE9/SE10/SE11 - SC1-M/ SC2-M - SC1-R (R40) 	<ul style="list-style-type: none"> - 33,36,40,46 - 28,30,31,33,36,40,46 - 28,30,31,33,36,40,46 - 28,30,31,33,36,40,46
U	<ul style="list-style-type: none"> - High yarn bulk - Good spinning stability - Low twist possible - Coarse yarn counts > 40tex - Ball warp indigo dyeing - Reduced snarling 	<ul style="list-style-type: none"> - Denim - (Terry yarns) - (Regenerates) 	<ul style="list-style-type: none"> - SE7/SE8 - SE9/SE10/SE11 - SC1-M/ SC2-M - SC1-R (R40) 	<ul style="list-style-type: none"> - 33,36,40,46 - 33,36,40,46 - 33,36,40,46 - 33,36,40,46
S	<ul style="list-style-type: none"> - High yarn bulk - Low twist possible - Soft knitting yarns - Low yarn strength but good Uster IPI - Cotton with high trash content - Coarse yarn counts > 30tex - Very low moiré 	<ul style="list-style-type: none"> - Hosiery yarns - Raised yarns - (Terry yarns) - Linen - Acrylics - Regenerates 	<ul style="list-style-type: none"> - SE7/SE8 - SE9/SE10/SE11 - SC1-M/ SC2-M - SC1-R (R40) 	<ul style="list-style-type: none"> - 40,46,56 - 36,38,40,46,56 - 36,38,40,46,56 - 36,38,40,46,56

Coatings	Characteristics
BD	<ul style="list-style-type: none"> - Universal application - High wear resistant - Excellent yarn characteristics
B	<ul style="list-style-type: none"> - High wear resistant - Low twist possible - Easy to clean
B5	<ul style="list-style-type: none"> - Viscose/ Rayon yarn - High wear resistant - Excellent yarn characteristics
D	<ul style="list-style-type: none"> - Universal application - Good yarn values

